

# Muckleshoot Preservation Program & Repository



# Muckleshoot Preservation Program

- Phillip Starr Building, Muckleshoot Reservation
- Address: 39015 SE 172<sup>nd</sup>, Auburn, WA 98396
- On SR164 between Auburn & Enumclaw

# Established Spring of 2000

- Agencies' increased awareness of Repatriation Laws & Inventories, Cultural Laws & Compliance
- MIT Consultation
- Beginning reviewed of 50- 100 projects
- TODAY - over 500 projects and growing

**RESULTING  
IMPACT:  
Increasing State  
Cultural Studies  
& Site  
Protection**



Gathering at Mule Springs

# Muckleshoot Consultation Protocol

## Muckleshoot Tribal Council

Virginia Cross, Chair

Mike Jerry Sr., Vice Chair

Charlotte Williams, Secretary

Marie Starr

Kerry Marquez

Marcie Elkins

Louie Ungaro

Mark James

Nick Bennett

## 1<sup>st</sup> Step for Formal Consultation

- letter addressed to the Chair
- CC appropriate staff



# Preservation Program Staff



**Preservation Committee**  
Mark James, Chair (TC)  
Louis Ungaro (TC)  
Dennis Anderson, Sr.  
Melvin Daniels  
Jackie Swanson  
Willie Murphy  
Val Bellack

Melissa Calvert, ATOM

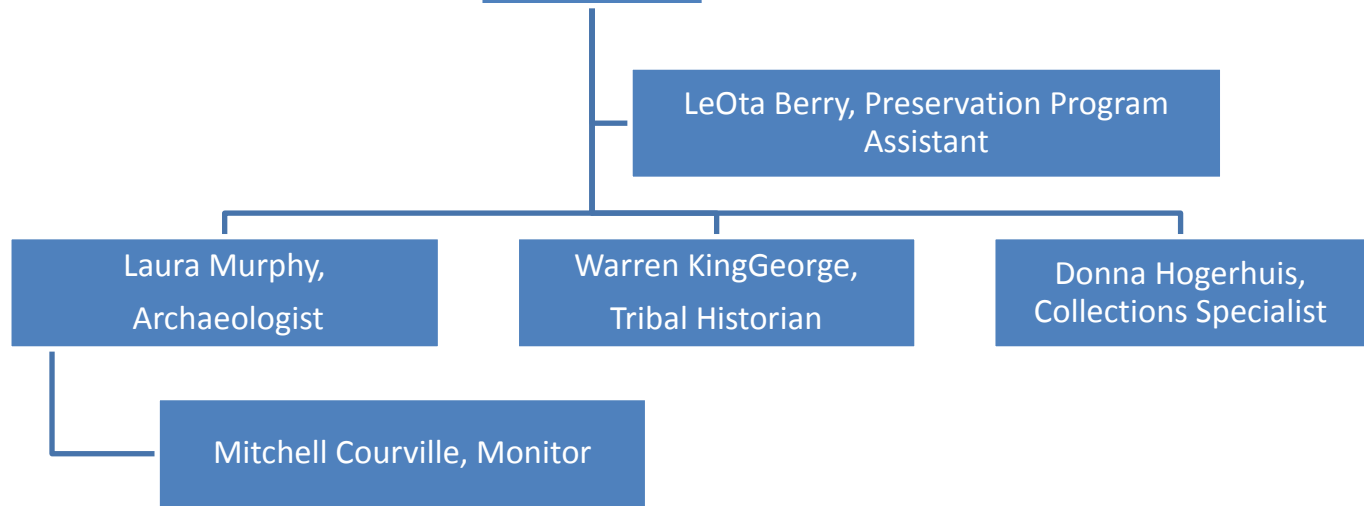
LeOta Berry, Preservation Program Assistant

Laura Murphy, Archaeologist

Warren KingGeorge, Tribal Historian

Donna Hogerhuis, Collections Specialist

Mitchell Courville, Monitor



# Muckleshoot Preservation Program

Laura



Warren



Repository-  
NPS 36CFR Part 97.4 - Definitions

- Museum Professional
- Professional Archaeologist



Donna

# MIT - 4 Types of Collections

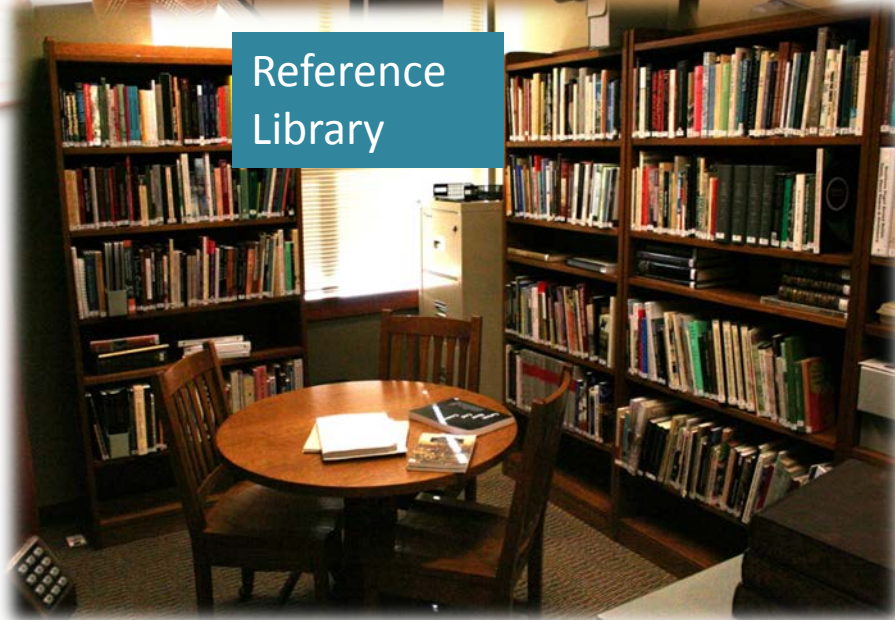
Ethnology



Archives



Reference Library



Archaeology



# Muckleshoot Preservation Program



Processing  
Rooms





# Collection Ownership

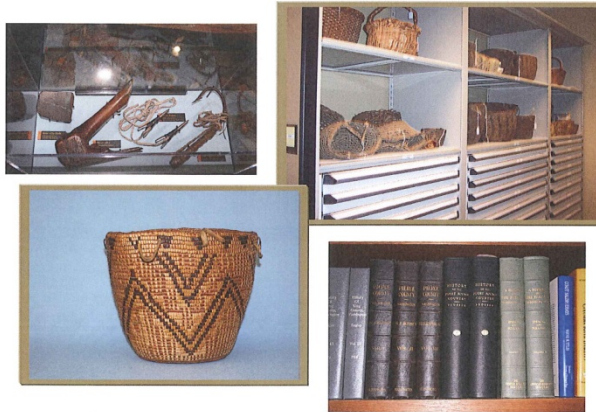
1. Tribally Owned
2. Privately Owned
  - Loans
  - Tribal Member Deposits
3. Publicly Owned - Held in Trust



Each type discussed in our Collections Policy

# Muckleshoot Preservation Program

## Muckleshoot Preservation Program Collections Policies and Procedures



Muckleshoot Indian Tribe  
Preservation Program

Muckleshoot Tribe, Preservation Program

## Emergency Plan Prevention and Management For the Artifact, Library and Archives Collection

### Muckleshoot Preservation Program- Integrated Pest Management Policy and Procedures\*

This procedural guide is intended to serve as a source of basic information needed to implement an integrated pest management program for pests for the collections held by the Muckleshoot Indian Tribe's Preservation Program offices, including processing rooms, library, archives and collection storage rooms located within the Philip Starr Building.

A pest in the Tribe's collections can cause irreversible damage if not monitored or treated. The Tribe's collections and collections held in Trust must be protected. Each new pest problem will be analyzed on its own and will be the responsibility of the Collections Specialist. Before taking any actions to control a pest, the Collections Specialist will be sure that those actions will not themselves damage the museum's collections. Although the use of pesticides may at times be necessary, indiscriminate use or dependence on pesticides is unacceptable.

Any pest with chewing mouthparts is a risk to museum specimens. Carpet beetles, clothes moths, powderpost beetles, termites, cockroaches, and others pose direct threats to specimens through feeding damage, feces, and excretions. Some pests pose indirect risks such as fires (rodents gnawing on wires) and secondary infestations (cluster flies in attics can attract carpet beetles). Mold is another major cause of damage.

#### MONITORING AND THRESHOLDS FOR MUSEUM PESTS

##### Visual

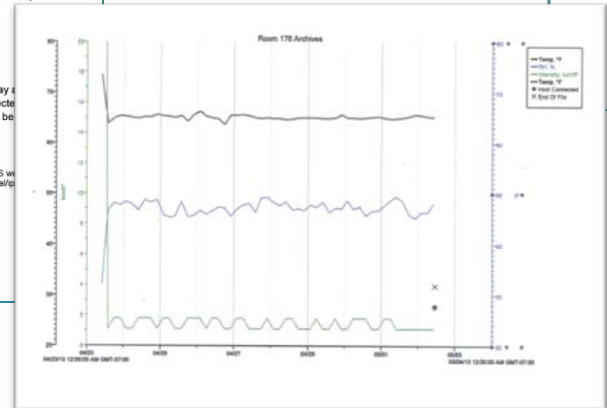
Regular and scheduled inspections of all specimens on display and in storage can prevent pest infestations from building up undetected. Display will be checked monthly. All collections in storage will be checked at least once a year.

\*Information for this report was directly taken by permission from the NPS Wetland Management Manual" url - <http://www.nature.nps.gov/biology/pm/manual/>

## Archaeological Curation Services Policies and Procedures

Muckleshoot Indian Tribe  
Preservation Program

## Storage & Exhibits Environment Log



# Muckleshoot Preservation Program

## Archaeological Curation Services Policies and Procedures

Muckleshoot Indian Tribe  
Preservation Program

39015 SE 172<sup>nd</sup> Ave.  
Auburn, WA 98092  
Phone 253-876-3273, Fax 253-876 3312

Donna Hogerhuis, Collections Specialist  
donna.hogerhuis@muckleshoot.nsn.us

August 7, 2012

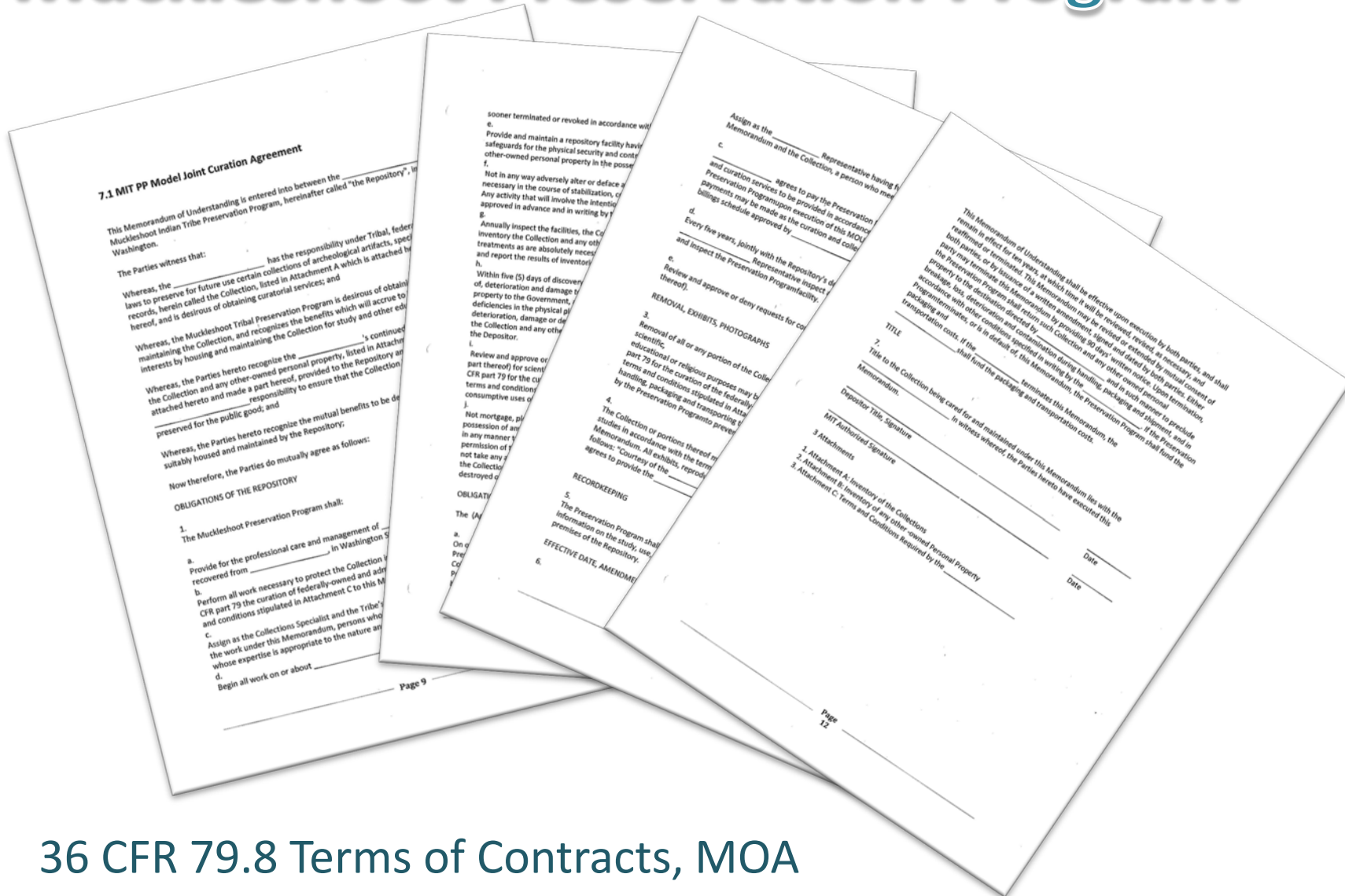
### Contents:

<b>Part 1: Curation Submission Documentation Requirements</b>	<b>3</b>
<b>Part 2: Curation Fees</b>	<b>3</b>
<b>Part 3: Curation Preparation Standards for Archaeological Specimens</b>	<b>3</b>
<b>Part 4: Curation Standards for Associated Documentation and Archival Only Collections in any Media</b>	<b>6</b>
<b>Part 5: Delivery of Collections for Curation</b>	<b>8</b>
<b>Part 6: Processing of Submissions</b>	<b>8</b>
<b>Part 7: Forms and Supplemental Information</b>	<b>8</b>
7.1 MIT PP Model Joint Curation Agreements	
7.2 Donation Agreement Form	
7.3 Material Submittal Form	
7.4 Fees for Services	
7.5 Catalog Specimen Affiliations and Categories	
7.6 Photograph Catalog Sheet	
7.7 Muckleshoot Preservation Program Collection Policy and Procedures	

## Criteria for acceptance

- TC Approval
- Materials associated with the prehistory, history, and culture of the Tribe
- Available space

# Muckleshoot Preservation Program



36 CFR 79.8 Terms of Contracts, MOA

# Muckleshoot Preservation Program

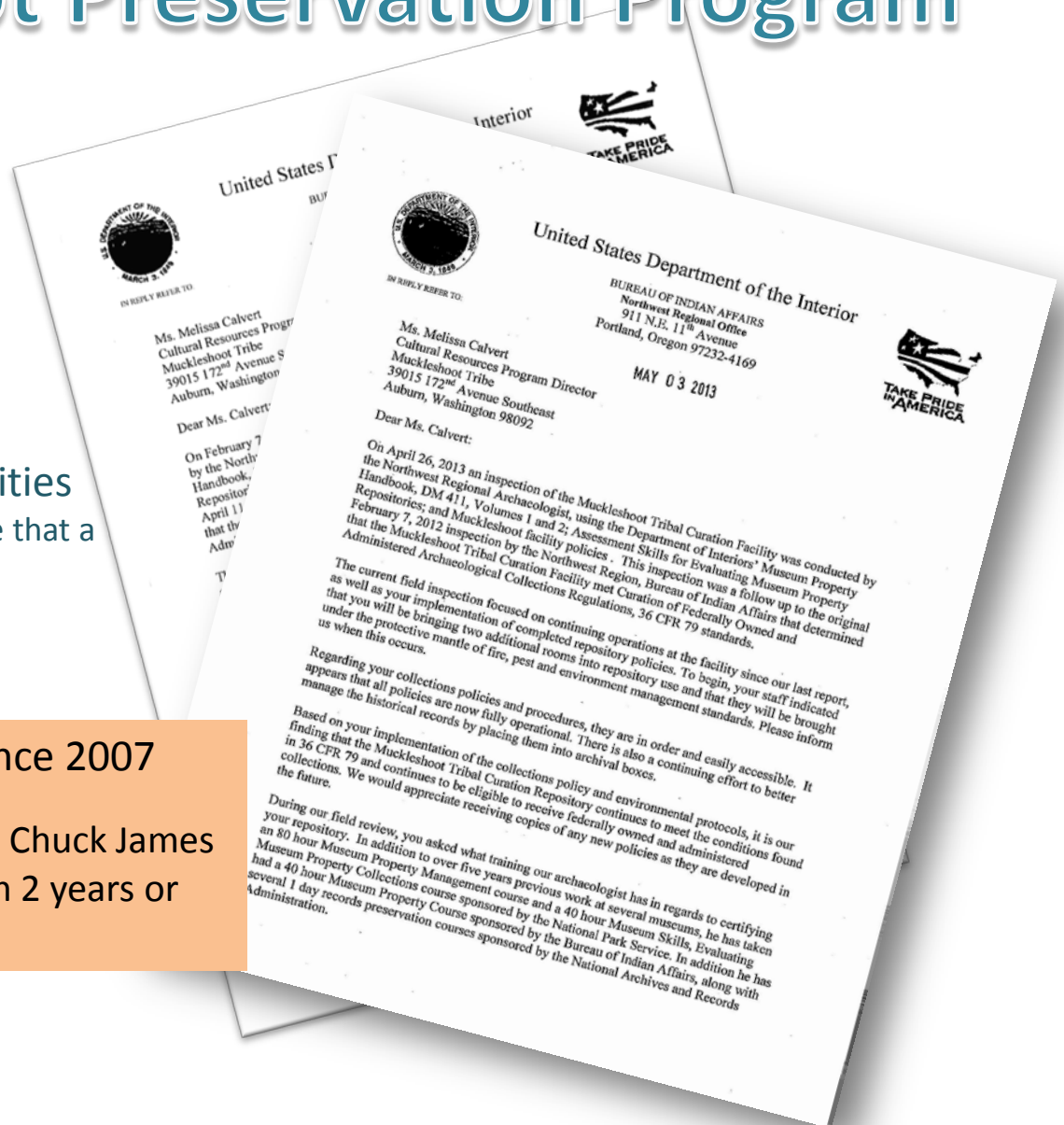
NPS 36 CFR -

79.9 Curatorial Standards of Facilities

Who has the Authority to determine that a repository meets Federal Standards

MIT - Physically Inspected since 2007

- NPS & BIA Certified inspector - Chuck James
- Inspected May 3, 2013 - next in 2 years or per MOA



# Muckleshoot Preservation Program

Access (complies with 36CFR 79.10)

## Conditions of Access

- Muckleshoot Tribal Members welcome
- Non-Tribal requests available by appointment only, form
- Approval of Preservation Program ATOM
- Closed Storage
- Photography & photocopy pre-authorization
- No smoking, eating, or drinking
- MIT Preservation Program citation in any published work

Researchers Code of Ethics



Harold Moses

# MIT Preservation Program

## *Some ISSUES*

1. Consult with local tribal historians & museums prior to writing cultural reports and location for Curatorial Services
  - To increase accuracy in reports on Tribe's History
  - Awareness of a Tribe's storage facilities & desire to house collections found
  - Requirement in NPS 36 CFR 97.6: Methods to Secure Curatorial Services



Louise "Doc" Starr

2. Getting the word out - MIT is a Repository for Federal, State and Local Collections
3. Need to find the funding for comparative studies & interpretive research of archaeological sites & found collections